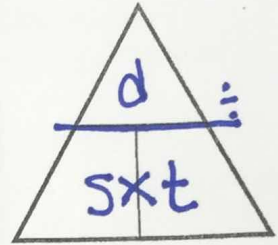
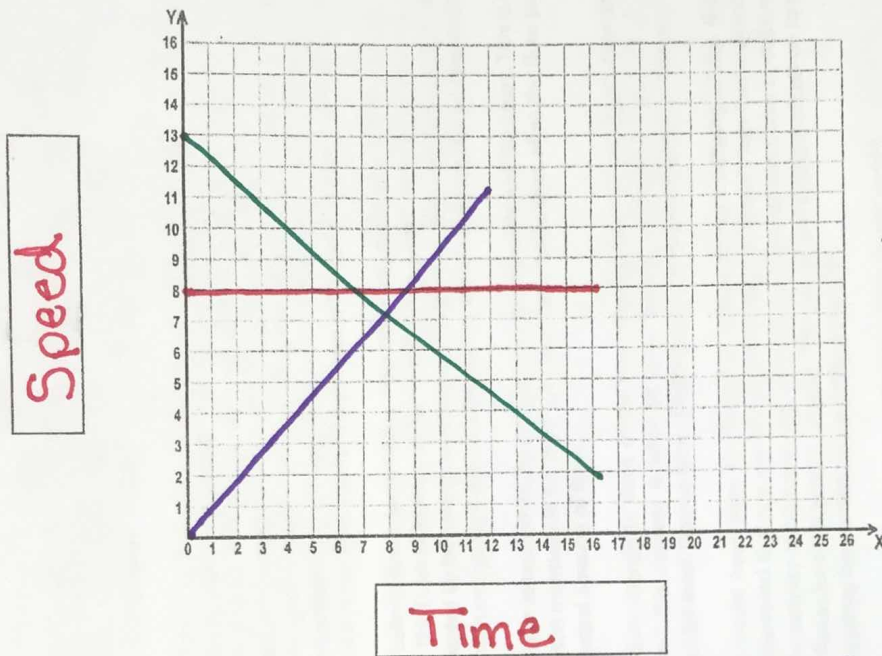


SPEED (VELOCITY) - TIME Graphs



SPEED = $d:t$

DISTANCE = sxt

TIME = $d:s$

A SPEED-TIME GRAPH SHOWS: how the speed of an object changes over time.

A STRAIGHT HORIZONTAL line means...

Speed is constant
Not changing over time.
Is moving

A DIAGONAL (POSITIVE SLOPE) line means...

Increasing speed.
object is accelerating
(speeding up)

A DIAGONAL (NEGATIVE SLOPE) line means...

decreasing speed
object is decelerating
(slowing down)