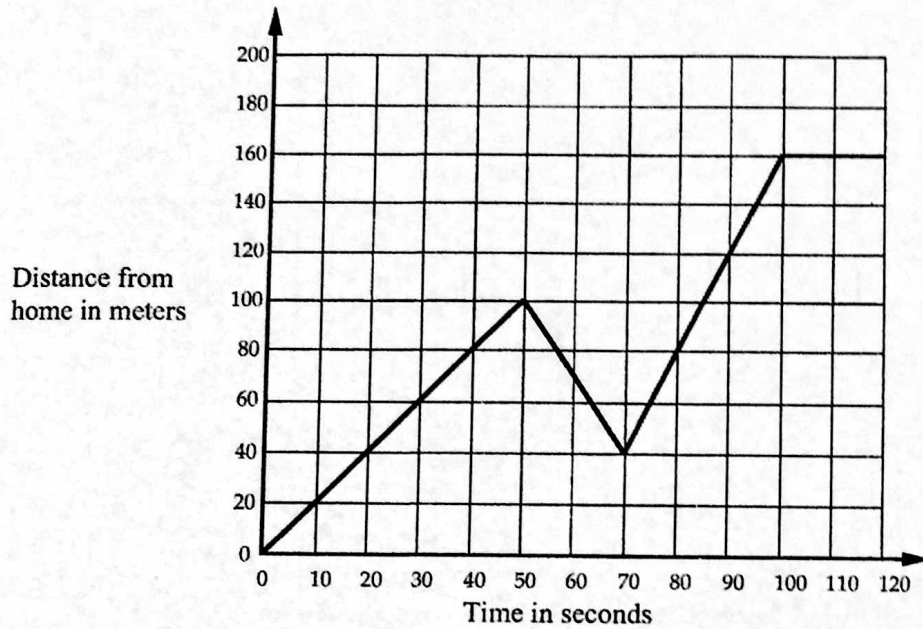


Journey to the Bus Stop

Every morning Tom walks along a straight road from his home to a bus stop, a distance of 160 meters. The graph shows his journey on one particular day.



- 1 Describe what may have happened. You should include details like how fast he walked.

.....

.....

.....

.....

.....

.....

.....

- 2 Are all sections of the graph realistic? Fully explain your answer.

.....

.....

.....

.....