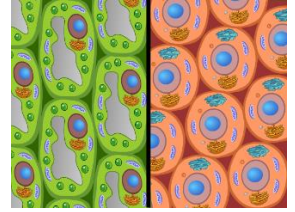


# Cells RAFT

Cells are the basic unit of life. All living things have cells and they carry out all the necessary functions of each living organism. Just think...we have trillions of cells in our body; each microscopic to the human eye; all working together to ensure our survival. So, are the cells within us the same type of cells in things such as plants? Are there any similarities? Differences? How do cells know what to do? What happens if something goes wrong in a cell?



**TASK:** Create a final product based on your chosen RAFT.

- Choose a role you would like to play. From there move **horizontally** to determine the format, topic and audience for your product.
- Class notes may be used.
- It is *encouraged to do additional research* for your topic in order to create a high quality product.
- In your final product be sure to explain the function of a **MINIMUM of 10 cell organelles**. The following **MUST** be included in this total...

Cell Membrane	Cell Wall	Nucleus
Chloroplasts	Mitochondria	Vacuole

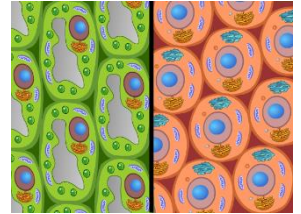
ROLE	AUDIENCE	FORMAT	TOPIC
Animal Cell	Plant Cell	Love Letter	Why we are good together (think of our similarities)
Plant Cell	Animal Cell	Break-up Letter	Why we won't work out (think of our differences)
Existing Plant or Animal Cell	New members (plant or animal cells)	Owner's Guide	My parts and how I function
Mitochondria	Other cell organelles	News Article	Why we can't quit our jobs

**\*\*\* Final product should look like required format\*\*\***

Final products must be

- Typed (12 point font)
- Double spaced
- MINIMUM of one-page typed
- **Submitted to GOOGLE Classroom by Wednesday, February 27**

# Cells RAFT Rubric



Student Name:

## Topic/Accuracy

Information present is accurate; uses support & detail; includes the minimum 10 organelles  
Stays on topic; provides elaboration & support of topic

5      4      3      2      1

**Comments:**

## Role

Student stayed in the role assigned. Student took on the role effectively. Role convincing to audience.

5      4      3      2      1

**Comments:**

## Format

Student stayed in assigned format; final product designed to look like chosen format

5      4      3      2      1

**Comments:**

## Grammar

The writing had no errors in punctuation, capitalization, or spelling

5      4      3      2      1

**Comments:**

## Overall Quality

Student's BEST effort is evident. Final product is neat and well organized.

5      4      3      2      1

Final product typed (12pt font), double spaced, minimum of one page typed

**Comments:**

**Assessment guide: 5 = Exceptional    4 = Effective    3=Developing    2=Emerging    1=Not Yet**

